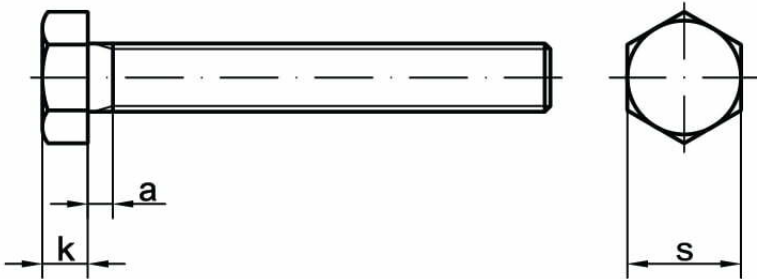
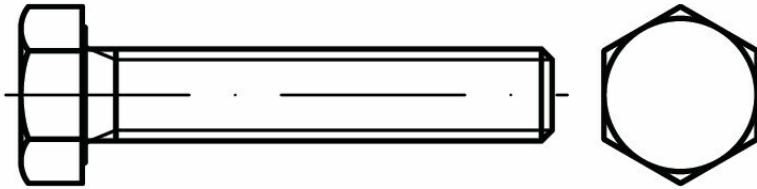




Full thread hex head bolts and screws DIN 933



STANDARD	MATERIAL	CLASS	COATING
DIN 933 ISO 4017 PN 82105	C35 C45 24CrMo5 25CrMo4 42CrMo4 1.4571 A2, A4 Brass Copper	4.8 5.6 5.8 8.8 10.9 12.9	galvanized zinc hot-dip galvanized zinc thermo-diffusion zinc coating lamellar coatings (flake) zinc-nickel

d	M1	M2	M2,5	M3	M4	M5	M6	M7
P	0,25	0,4	0,45	0,5	0,7	0,8	1,0	1,0
k _{DIN/ISO}	1,4	1,4	1,7	2,0	2,8	3,5	4,0	4,8
e _{DIN/ISO}	4,3	4,3	5,4	6,01	7,66	8,79	11,05	12,12
s _{DIN/ISO}	4	4	5	5,5	7	8	10	11

d	M8	M10	M12	M14	M16	M18	M20	M22
P	1,25	1,5	1,75	2,0	2,0	2,5	2,5	2,5
k _{DIN/ISO}	5,3	6,4	7,5	8,8	10,0	11,5	12,5	14,0
e _{DIN/ISO}	14,38	17,17	20,03	24,49	26,75	30,14	33,53	35,72
s _{DIN/ISO}	13	16	18	22	24	27	30	32

d	M24	M27	M30	M33	M36	M39	M42	M45
P	3,0	3,0	3,5	3,5	4,0	4,0	4,5	4,5
k _{DIN/ISO}	15,0	17,0	18,7	21,0	22,5	25,0	26,0	28,0
e _{DIN/ISO}	39,98	45,2	50,85	55,37	60,79	66,44	71,3	76,95
s _{DIN/ISO}	36	41	46	50	55	60	65	70

d	M48	M52	M56	M60	M64	M68	M72	M76
P	5,0	5,0	5,5	5,5	6	6	6	
k _{DIN/ISO}	30,0	33,0	35,0	38,0	40,0	43,0	45,0	
e _{DIN/ISO}	82,6	88,25	93,56	99,21	104,86	110,51	116,16	
s _{DIN/ISO}	75	80	85	90	95	100	105	

P – Pitch metric