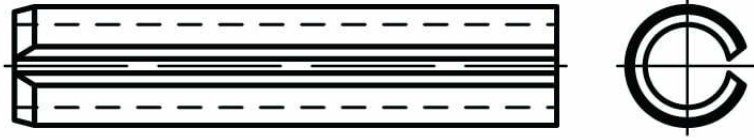
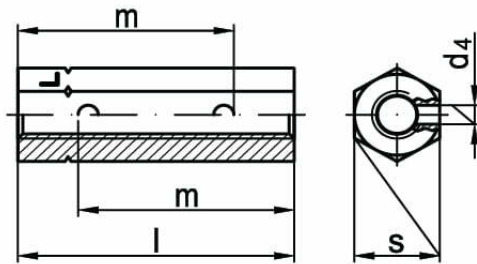




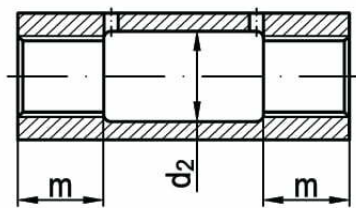
Hexagon turnbuckle sleeve DIN 1479



≤ M 16



≥ M 20



STANDARD	MATERIAL	CLASS	COATING
DIN 1479 PN 82267	steel A2 A4 brass		galvanized zinc

d	M6	M8	M10	M12	M16	M20	M24	M30	M36
d ₂	–	–	–	–	–	21	26	32	38
d ₄	4	4	4	4	4	4	4	4	4
l	30	35	45	55	75	95	115	125	145
m	22,5	25	33	40	55	24	29	36	45
s	10	13	17	19	24	30	36	46	55
range tensioning	15	15	21	25	35	47	57	53	70